

A person's hands are shown working on a green printed circuit board (PCB). The board is populated with various electronic components, including integrated circuits, capacitors, and resistors. Several colored wires (yellow, green, blue, red) are connected to the board. The background is blurred, showing a person in a white lab coat. The text is overlaid on the image.

ELECTRICAL TRADE SAMPLER

NORKAM

THINGS TO CONSIDER

THE ELECTRICAL TRADE

- ✓ Residential
- ✓ Commercial
- ✓ Industrial



Residential

- *Single Family Homes (detached)*
- *Duplexes*
- *Townhouses*
- *Condos / Apartments*
- *Manufactured Homes*













Commercial

- *Retail*
- *Restaurants*
- *Office Spaces / Schools / Universities*
- *Hotels / Motels*
- *Entertainment Venues*
- *Medical Clinics / Hospitals*



The image shows the interior of a restaurant named 'The Den'. The space is characterized by a high ceiling with exposed wooden beams and numerous strings of warm-toned Edison-style light bulbs. The walls are made of brick, and there are several flat-screen TVs mounted on them. The seating consists of long wooden tables paired with wooden benches. In the background, there is a bar area with stools. The overall atmosphere is rustic and modern.

THE DEN











Not a perfect video (a few discrepancies) but, well put together!

VIDEO

TEGG Service. (May 28, 2014)

The Electrical Distribution System. YouTube.

<https://www.youtube.com/watch?v=Fqk0G1yDjeY>



Industrial

- *Factories*
- *Water Treatment Facilities*
- *Saw / Pulp / Plywood Mills*
- *Mining*
- *Food Processing Plants*









*This video has no sound...
how about some Metallica!*

VIDEO

BID Group. (May 4, 2021)

Two Rivers Lumber, a Turnkey Facility Delivered by BID Group. YouTube.

<https://www.youtube.com/watch?v=qUI2BNurzV0&t=325s>

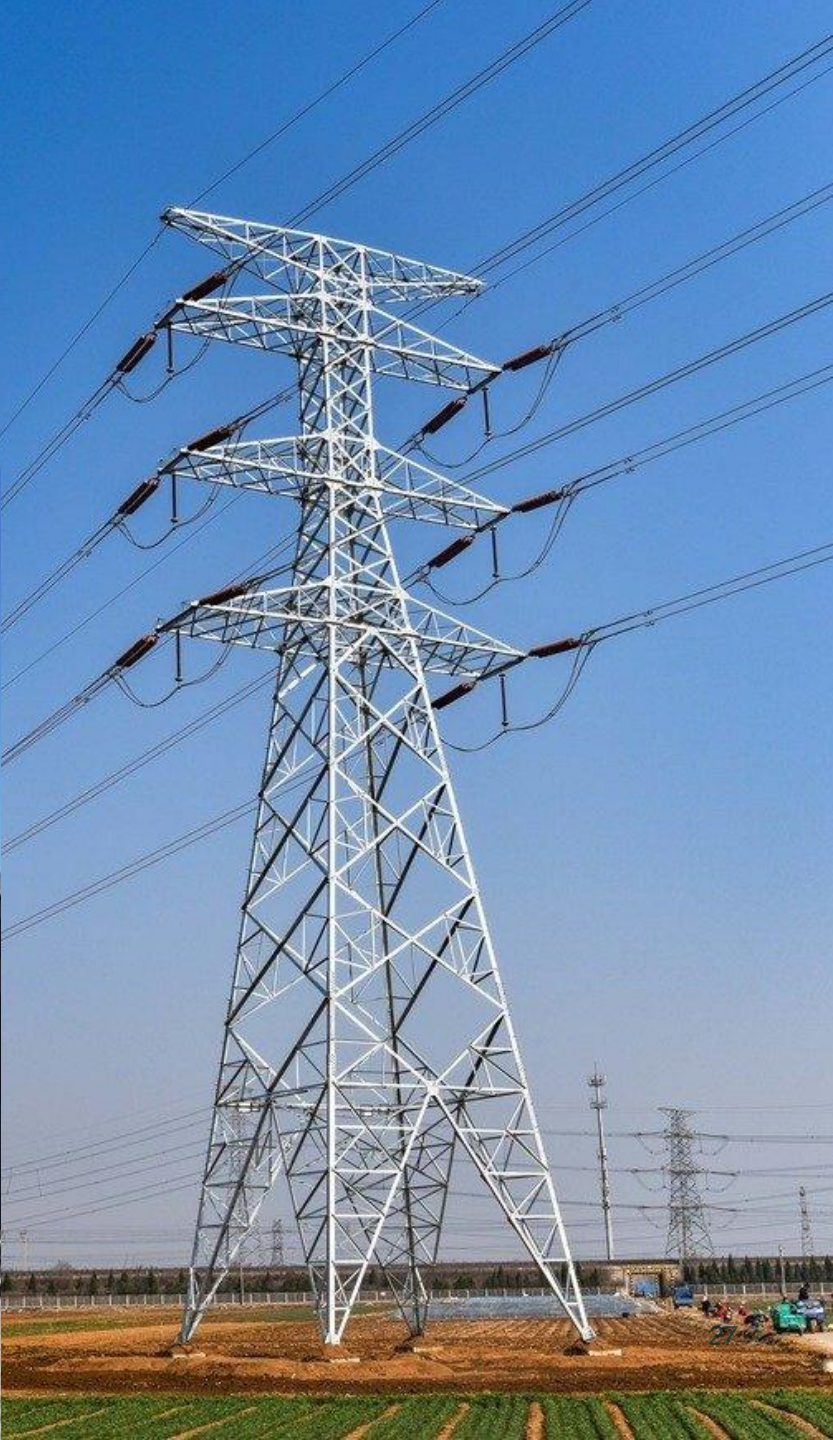
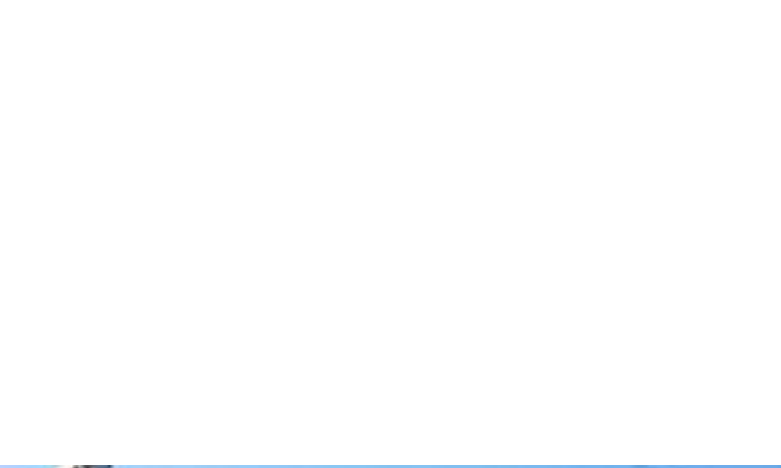




THE ELECTRICAL TRADE – OTHER SPECIALTIES

- ✓ PV (Solar)
- ✓ Utilities (BC Hydro)
- ✓ HVAC Automation and Controls
- ✓ Instrumentation / Automation
- ✓ Facility Maintenance
- ✓ Fire Alarm Systems









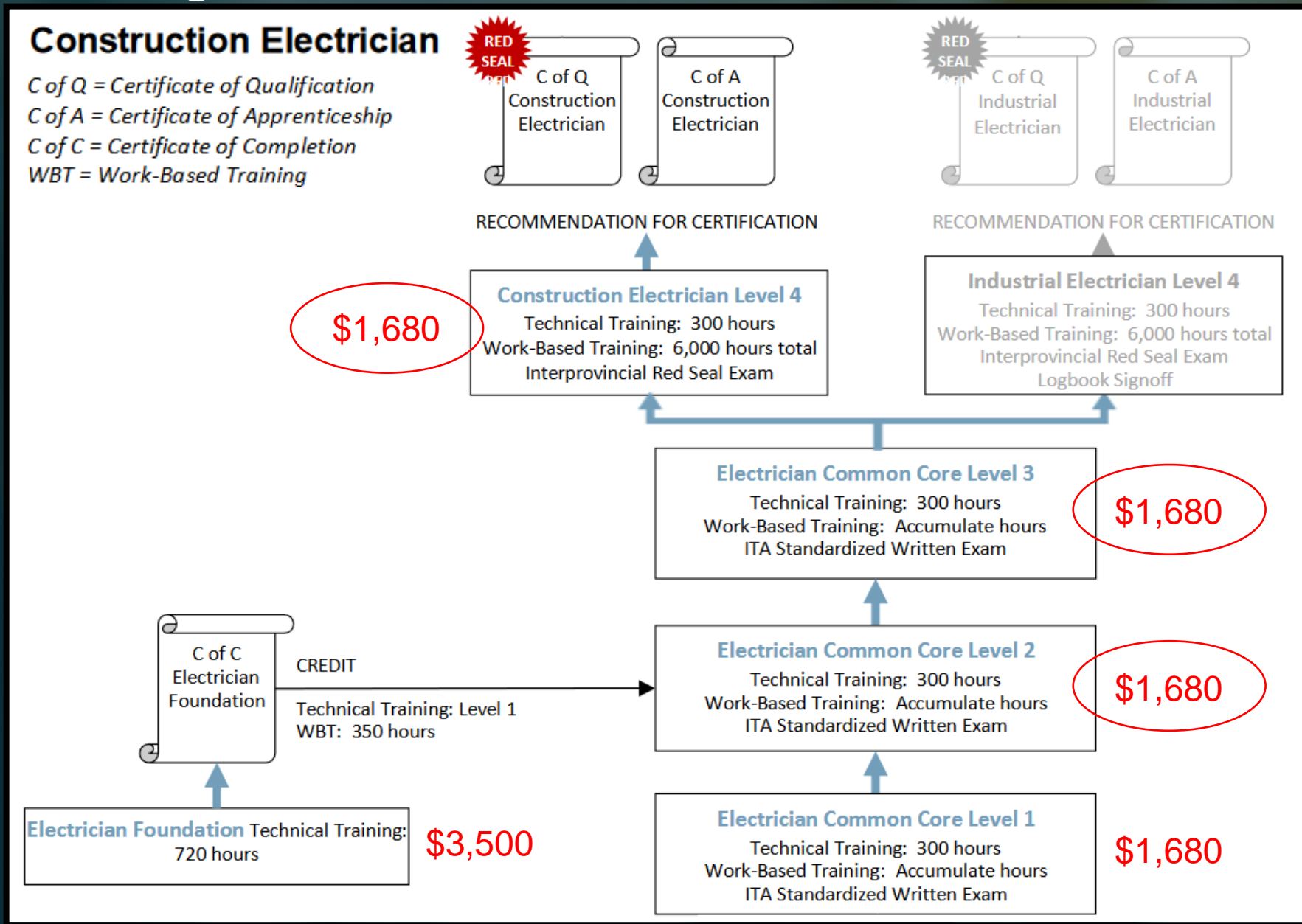




WHAT TO EXPECT?

- ✓ Technical Training Structure
- ✓ Incentives and Credits
- ✓ Entry Wages / Qualified Wages
- ✓ Working Hours / Shifts
- ✓ Questions

Technical Training Structure



Tuition dollars are approximate



Incentives and Credits

- *Completion tax credit: \$2,000 for completion of 3rd year / \$2,500 for 4th year*
- *Apprenticeship completion grant: \$2,000 for completion of the red seal apprenticeship program*
- *More financial supports offered at www.workbc.ca*



Incentives and Credits

- *While you attend levels 2, 3 and 4 technical training you will be eligible for EI benefits*
- *55% of your normal wage (up to a maximum)*
- *Pretty sweet deal for a student – no other programs that I know about offer this type of incentive*



Wages

- *Entry Wages (1st Year – 1st Term)*
 - *55% of certified wage*
 - *\$19 – 24 hourly*
 - *Approx. \$40,000 – 50,000 annually*
- *Red Seal Wages (Journeyperson)*
 - *\$35 – 50+ hourly*
 - *Approx. \$72,000 – 100,000+*



Shifts / Wages

- *Most Common Work Schedule*
 - *Monday – Friday*
 - *40 hours a week (8-hour days)*
 - *Start: 7:00 – 8:30am*



Shifts / Wages

- *In Town Shift Work*
 - *4 and 4 / 7 and 7 / Monday to Friday*
 - *10 - 12 hours a day*
 - *Start: 7:00 – 8:30 am/pm*



Shifts / Wages

- *Out of Town Shift Work*
 - *1 in 1 out / 2 in 2 out / 14 and 7 / 15 and 6 / 21 and 7*
 - *10 - 12 hours a day*
 - *Start: 7:00 – 8:30 am/pm*
 - *Fly in / Fly out (Camp Work)*
 - *LOA structure*
 - *Ability to make big \$\$\$*



My Take

- *No Barrier to Entry (at least for high school students)*
- *Decent Wage Right Away*
- *Valuable Life Skill – Home Ownership*
- *Growth Opportunities*
 - *Supervision / Foreperson*
 - *Project Management / Estimation*
 - *Business Owner*
 - *And More...*



Questions

- *What are your questions regarding an apprenticeship in the trades?*

Career Exploration Worksheet

Research 4 types of interesting careers and fill out 4 worksheets.

At least one of which must be a trade from our program. Pick your favorite!

RULES:

You will spend each day researching a single career path. Each filled worksheet will earn you 12.5%. Therefore, all 4 are worth 50% (final exam mark). They must be easily legible, and all handed in together at the end of the day on Thursday to receive a mark.

Not on Task?

1st Offence:

If I see you playing a game, texting your friends, on your phone and off task in any way, you will get no warning and lose half of your participation mark for the day (12.5%)

2nd Offence:

You will receive no participation mark for the day (12.5%)

3rd Offence:

If there is a third offence you will write a final exam on Thursday as previously planned (37.5% max) and will not have the chance to receive participation for career exploration activity.